



Symphony Notes

A publication of the Livermore-Amador Symphony and Guild

Vol.52, No.2, February 2015

THE LIVERMORE-AMADOR SYMPHONY

Arthur P. Barnes, Music Director Emeritus

Presents

Young Love

Lara Webber, Music Director & Conductor

Saturday, February 21, 2015, at 8:00 p.m.

**BANKHEAD THEATER, 2400 First Street, Livermore
Livermore Performing Arts Center**

Prelude talk 7:00 – 7:30 p.m.

Doors open no earlier than 6:45 p.m.

Lara Webber

Overture to *The Barber of Seville*

Gioachino Rossini

**Piano Concerto No. 2 in G Minor, Opus 16 (1st movement)
Vincent Liu, soloist**

Sergei Prokofiev

***Clair de lune* (arr. Arthur Luck)**

Claude Debussy

~~~~~**Intermission**~~~~~

**Piano Concerto No. 3 in D Minor, Opus 30 (Finale)  
Misha Galant, soloist**

**Sergei Rachmaninoff**

***Romeo and Juliet* Fantasy–Overture**

**Pyotr Ilyich Tchaikovsky**

#### **TICKET INFORMATION**

Tickets are available at the Bankhead ticket office.

Contributions to the Symphony may also be given at the ticket office.

**In Person:** Bankhead Theater Ticket Office, 2400 First Street, Livermore

Tuesday through Friday, Noon to 6 p.m.; Saturday 3–6 p.m.

**Website:** [www.bankheadtheater.org](http://www.bankheadtheater.org)

**Phone:** 925-373-6800

Make checks payable to LVPAC.

---

**Linda Tinney,  
LAS Guild**

♪♪ *From our  
Presidents* ♪♪

**Denise Leddon,  
LAS Association**

---

Happy New Year, everyone! I think I must say this every year, but where did the year go? The older I get the shorter the years seem.

We have three fabulous concerts ahead of us. The February 21<sup>st</sup> concert will feature two extremely talented young musicians. You won't want to miss it. The Guild will host refreshments in the lobby following the program. Please join us as we meet, greet, and congratulate these outstanding young performers.

The Guild is planning several events to celebrate the "The Red Violin" concert in May. See page 3 for a preview, and watch for further details soon. You just might have an opportunity to experience this very famous violin "up close and personal!"

The Guild is always looking for enthusiastic volunteers to help in all we do. To learn more about joining our ranks, please contact our membership chair, Linda Miller at 925-443-7398.

A HUGE thank you to the Guild members and especially the Guild Board for their tireless efforts in supporting the Symphony.

*Linda Tinney, LAS Guild President*

~~~~~  
**Notice to Concert Ticket Holders.
Can't use your concert tickets?**

Call the Bankhead Ticket Office (925-373-6800) up to 1 hour before the concert to release your seats. You will be mailed a tax donation receipt.

~~~~~


Livermore-Amador Symphony is a member of Livermore Cultural Arts Council (LCAC), which encourages "cross-promotion" among the arts groups. Check out their calendar: [http://independentnews.com/event\\_calendar/](http://independentnews.com/event_calendar/)

Wasn't that a wonderful December concert? Thank you to our new music director Lara Webber and all our musicians! Our hard work paid off—we were delighted to play to a sold-out audience! I asked photographer Walt Davies to capture us during the performance—look for our candid symphony photos on Facebook! You don't need to be a member of Facebook to see them, but please do register and "like" us when you get a chance. You expose all your friends to us when you do. Social media, i.e. Facebook, is an important and inexpensive marketing tool today.

Great things are happening behind the scenes! LAS and the other resident companies of the Bankhead are meeting with the Livermore Performing Arts Center's new executive director Scott Kenison, along with new and continuing LVPAC staff members, to develop ideas that will make our Bankhead and Bothwell performing arts centers ever so much better.

We are now busy rehearsing the February concert music—it will be a lively performance. As I watch Lara conduct, it is obvious she enjoys the music and is having a good time. So are we! The music is great; don't miss it! See you there!

*Denise Leddon, LAS Association President*

|                                                                                                                                                         |                                                                                                                                        |
|---------------------------------------------------------------------------------------------------------------------------------------------------------|----------------------------------------------------------------------------------------------------------------------------------------|
| <b>Attention<br/>Facebook<br/>Users!</b><br> Like us on<br>Facebook® | Kathy Boster, who plays clarinet in the Symphony and co-directs our youth orchestra, also manages our Facebook presence. Check us out! |
|---------------------------------------------------------------------------------------------------------------------------------------------------------|----------------------------------------------------------------------------------------------------------------------------------------|

*Editor's note:* Kathy does a great job keeping our Facebook up-to-the minute. Her "downbeat 9 hours away" post noting 44 seats left no doubt helped our December concert sell out!

*Symphony Notes* is published four times a year for members of the Livermore-Amador Symphony Association, Orchestra, and Guild. Symphony Association President Denise Leddon; Guild President Linda Tinney; Editor Marcia Stimatz Elchesen.  
PO Box 1049, Livermore, CA 94551-1049. 925-373-6824.  
Website: [www.livermoreamadorsymphony.org](http://www.livermoreamadorsymphony.org)

# Highlights of Upcoming Concerts



## February 21 Concert

**Featured Soloists**  
**Winners of the 42<sup>nd</sup> Annual**  
**Competition for Young Musicians**

### **Vincent Liu, piano**

Prokofiev's Piano Concerto No. 2 in G Minor,  
Opus 16 (1<sup>st</sup> movement)  
Sophomore, Dougherty Valley High School, San Ramon  
Parents – Jian Liu and Bettie Geng

### **Misha Galant, piano**

Rachmaninoff's Piano Concerto No. 3 in D Minor,  
Opus 30 (Finale)  
Junior, California High School, San Ramon  
Parents – Jed Galant and Olya Katsman

**Bios of Vincent and Misha are on page 5.**



## In the Bankhead Lobby:



### **Intermission Performance** **Element 116 Jazz Band**

Read the scoop about this kids jazz band  
in your February concert program!

**~Following the Concert~**  
**Cookies and Punch Reception**

♪ **May 2014 LAS concert recordings** ♪  
**will be available for purchase.**

**DVD - \$20 ♪ CD - \$15 ♪ Both - \$30**



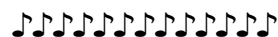
## May 16 Concert

### **“Beethoven and the Red Violin”**

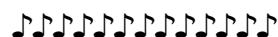
#### **Featured Soloist**

**Elizabeth Pitcairn, violin**

Beethoven's Violin Concerto in D Major



**Don't miss out on these additional special fun fundraising events planned by the Symphony Guild as part of the May Concert festivities. Mark your calendar now and stay tuned for details about ticketing!**



### **Screening of the film *The Red Violin***

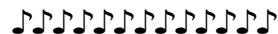
This story was inspired by the history of the 1721 Mendelssohn Red Violin, crafted by Antonio Stradivari. Ms. Pitcairn will perform on this very instrument at the concert and soiree. The film opens in 1681 with the making of the violin and an important tarot card reading. Forward to 1997 and a high stakes auction in Canada. Mystery! Intrigue! Support the Symphony with other LAS friends by enjoying an evening of fun at the Vine and Zephyr's in downtown Livermore.

**Thursday, May 7, 2015, 7:00 PM**  
**Vine Cinema**

**1722 First St., Livermore**  
*Immediately followed by a*  
**Dessert and Wine Buffet**  
**Zephyr Grill and Bar**

**1736 First St. (next door to the Vine)**

**Cost: \$10 movie only**  
**\$50: movie and buffet**  
**Watch for details!**

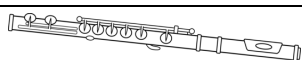


### **Musical Soiree with Elizabeth Pitcairn**

Friday evening, May 15, 2015

Cost: \$85

This event will be held in a private home and feature a solo performance by Ms. Pitcairn as well as a festive hors d'oeuvres buffet. Additional details to be announced.



## April 11 Concert

### **“Fantastic Flute”**

Devienne's  
Flute Concerto  
No. 7 in E Minor

### **Annie Wu, flute**

Our soloist, Annie Wu, is a 2014 Foothill High School graduate and a Presidential Scholar in the Arts. She is now studying at Harvard University and the New England Conservatory of Music in Boston.

## ♪♪ **YOUTH - *The Future of Classical Music!*** ♪♪

Supporting youth music education has been an important commitment for the Symphony throughout its history. This issue of *Symphony Notes* features three of our youth programs: The annual **Competition for Young Musicians**, the **Education Awards**, and **Fiddle Club**. Our **Livermore-Amador Symphony Youth Orchestra (LASYO)** completed its 6<sup>th</sup> season in August 2014 and was featured in the December 2014 issue. In addition to these programs, some high school musicians are regular LAS orchestra players and receive mentoring from experienced LAS players. We are also working with our music director Lara Webber to develop opportunities for children and their parents to attend some of our concert dress rehearsals.



### **COMPETITION FOR YOUNG MUSICIANS**

The annual competition is open to vocalists and instrumentalists through grade 12. The winners perform as soloists at a Symphony concert and receive a monetary award (currently \$500). See page 5 to read about our 2014–2015 winners, pianists Misha Galant and Vincent Liu, who will perform at the February concert. In addition, three other competition participants are selected to perform at the Winter Guild Meeting. Students chosen this year were April Chen (piano), Min Su Kim (clarinet), and Alex Chen (piano). See article on page 6. More information about the competition is also available on the LAS website.

Thanks to JoAnn Cox, Competition Chair.

### **2014–2015 Student Award Winners Presented at December 6<sup>th</sup> Concert**

The Symphony Association administers four awards (currently \$400 each) to recognize high school seniors who have made significant contributions to school and community musical activities. This season, the awards went to these four outstanding students. Their biographies appeared in the December concert program and are also available on the LAS website Youth Awards page.

**Arthur P. Barnes Award:** violin player **Ethan Ha** of Livermore High School.

**John H. Green Memorial Award:** violin and viola player **Dana Anex** of Livermore High School.

**Bill King Memorial Award:** trombone and piano player **Alice Williams** of Granada High School.

**Association Award (in memory of Albert Oliver, Jr.):** flute, piccolo, and piano player **Jennifer Jo** of Amador Valley High School.



### **Fiddle Club 2015**

Fiddle Club is currently in session at Jackson Avenue Elementary School in Livermore! This is the third year of Fiddle Club, a program aimed at introducing 5<sup>th</sup> graders to playing the violin. LAS players and LASA Board members Beth Wilson and Jutta Massoud introduced the program at a 5<sup>th</sup> grade assembly in December 2014.

Although 32 students wanted to join, only the first 22 children to sign up could be accommodated. The sessions run each Thursday 3:00–3:45 p.m., January 8 through February 26. Jutta Massoud is teaching the group again, this year with assistance from her teenage daughter Anya. The students are given the instrument, shoulder rest, and the violin lesson book with practice CD for the two-month duration of Fiddle Club.

As part of the program, the young fiddlers are also invited to attend the February 21<sup>st</sup> LAS concert at the Bankhead Theater. Fiddle Club is offered at no cost to the students, thanks to funding LASA was able to obtain from grants.

We are happy to report that more than half of last year's Fiddle Club students chose Orchestra as their elective when they started middle school!



## 42<sup>nd</sup> ANNUAL COMPETITION WINNERS

### SOLOISTS FOR THE FEBRUARY CONCERT



**Vincent Liu**, age 16, started piano lessons at age 5 and is now a student of Hans Boepple. He previously studied with Jed Galant and David Ross.

His most recent recognitions include 1st place in the Marilyn Mindell Senior Piano Competition of the Peninsula Symphony, a winner of the California Association of Professional Music Teachers (CAPMT) Honors Auditions, an alternate in the California State Senior Division of the Music Teachers National Association Competitions, and 4<sup>th</sup> place at the Los Angeles International Liszt Competition. Earlier in 2014, he won 1<sup>st</sup> prize in the San Jose International Piano Competition, two 1<sup>st</sup> prizes and gold medals in showcase solo and complete concerto categories of the US Open Music Competition, a 2<sup>nd</sup> place at the Zeitor Piano Competition of the University of the Pacific, and a Helen Elliott Special Award at the Pacific Musical Society Competition. He will appear as a soloist with the Peninsula Symphony this coming April.

In previous years Vincent's awards included 1<sup>st</sup> prize in both the Music Teachers Association of California (MTAC) and CAPMT all-state Concerto Competition, with the performance of Prokofiev Concerto No. 3; 1<sup>st</sup> alternate, two times, at MTAC and CAPMT Northern California Concerto Competition; 1<sup>st</sup> place at the Menuhin-Dowling Competition; 1<sup>st</sup> place at the East Bay Music Festival Solo Competition at ages 9, 11 and 14; winner at the El Camino Youth Symphony Concerto Competition; the Marilyn Mindell Junior Piano Competition; and the MTAC Alameda Memorial Foundation Scholarship Competition. He made his orchestral debut at age 12 with the El Camino Youth Symphony, and at age 13 was chosen to attend Colburn School Young Artists Summer Academy.

Vincent is also an outstanding athlete. He plays competitive club soccer and is on his high school varsity team. This year, he is a state Olympic Development Program player and was invited to play with the state travel team at the regional championships tournament in Arizona. He is a licensed soccer referee and a certified lifeguard. He also excels in academics. He received Distinguished Honor Roll recognition for scoring in the top 1% nationally at the American Mathematics Competition (AMC) and was a qualifier for the American Invitational Mathematics Examination.

**Misha Galant**, age 17, began piano lessons at age 6 with his mother and current teacher, Olya Katsman. His musical heritage spans three generations of pianists: in addition to his parents, it includes his great-grandmother, a student of Vladimir Horowitz, and his great-grandfather, who studied with Heinrich Neuhaus in Kiev, Ukraine.

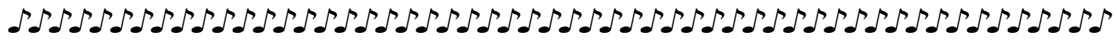
His accomplishments include first prizes in the Menuhin-Dowling Young Pianists Competition, the California Association of Professional Music Teachers (CAPMT) Bartók and Contemporary Music Competition, the CAPMT northern division Concerto Competition and Honors Auditions, the East Bay Music Festival, and the Marilyn Mindell Piano Competition. He was also the state winner in the 2010 concerto competition of the Music Teachers of California (MTAC). At age 12, as the winner of the Oakland East Bay Symphony concerto competition, he performed Chopin's Concerto No. 1 with the symphony. Recently, he was the winner of the Peninsula Symphony concerto competition and performed Rachmaninoff's Concerto No. 2 with that orchestra. Most recently he again won the CAPMT Honors Auditions and Concerto Competition.

He has performed numerous times in the Junior Bach Festival in Berkeley, and in master classes with Robert Schwartz, Gilbert Kalish, Mack McCray, Paul Hersh, Jean Barr, and Ann Schein. Among others, he has performed for Nelita True at Eastman School of Music, Gabriel Chodos at the New England Conservatory, and Boris Berman at the Yale School of Music. At age 12, he gave his first full solo recital in Mountain View, and has given a solo recital every year since then. In the summer of 2011, Misha participated in the Music@Menlo chamber music program and, for the past two summers, has attended the Foulger International Music Festival in Utah, where he won the concerto competition and performed with the Utah Symphony.

Misha is accompanist for both his former and current high school choirs and is a member of the Music Students' Service League, an outreach program that gives benefit concerts in retirement communities.

Misha is indebted to Sharon Mann of the San Francisco Conservatory of Music for her invaluable and inspirational coaching.

# SYMPHONY GUILD NEWS



## WINTER GUILD MEETING Young Musicians Performance

Three participants in the **Competition for Young Musicians** performed a wonderful concert for Guild members and guests at the Winter Meeting on January 22. Guild president Linda Tinney led a brief business meeting prior to the performances, then introduced Music Program chair Cyndy Salmon. She in turn called upon JoAnn Cox, the organizer of the annual Competition for Young Musicians, to introduce the student performers. Each student said a few words about the piece that he or she would perform.

The program opened with **April Chen**, a ninth grader at Amador Valley High School in Pleasanton. She performed two pieces on piano: the Impromptu No. 2 in F-sharp major, Op. 36, by Frédéric Chopin, and the 5th movement (“Chant”) of Five Concert Etudes, Op. 52, by A. Tcherepnin. The two solo works were well chosen for their great contrast in style, the Chopin romantic and beautiful, the Tcherepnin breathtakingly exciting, reflecting the Chinese music which inspired the composer’s work.

Next was **Min Su Kim**, who played one of the great standards of clarinet repertoire, C.M. von Weber’s Concerto No. 2 in E-flat major, Op. 74, 1st movement. Min Su, a senior at Foothill High School in Pleasanton, executed Weber’s highly technical passages over the full range of the clarinet with enormous skill, and demonstrated the innate beauty of the instrument’s sound. Pianist Susan Ingram provided a masterful accompaniment.

**Alex Chen**, a Pleasanton Middle School eighth grader, closed the program with the Italian Concerto in F, BWV 971, 1st movement, by J.S. Bach. In introducing the piece, Alex remarked that this solo piece for piano is not a true concerto. Nevertheless, it has all the earmarks of the great Baroque composer’s innovative style. Alex played it with confidence and expertise.

Following the performance and a brief photo session (see the LAS web and Facebook sites), the performers, Guild members, and guests enjoyed a reception, with refreshments provided by Guild members.

Many thanks go to JoAnn Cox for her dedication to the young people who participate in the annual LAS competition, and to Ann Kasameyer for again hosting both the competition and the meeting in her home.

*Cyndy Salmon, Music Program Chair*

## *Guild Estate Sales*

**\$ Money raised benefits LAS! \$**

### **SUPPORT THE GUILD’S EFFORTS:**

Income from estate sales is one of the primary ways the Guild raises money. Volunteer at a sale, shop at a sale, or ask the Guild to conduct a sale if you are closing out a home or significantly downsizing. If you’d like email notices of upcoming sales and don’t currently receive them, email **Marie Ruzicka**, *Estate Sales Chair*. <[marie.ruz@gmail.com](mailto:marie.ruz@gmail.com)>.

### **STILL NEEDED by Estate Sales Committee:**

A commercial space, such as an empty storefront, to hold a clearance sale of leftover items from donations and sales. Total time needed: about 7 days. (The room wouldn’t be available for others to use during this time.) Please contact **Marie Ruzicka** if you have a lead we can follow up on.

## **NEXT GUILD SALE**

**Saturday, February 28  
8AM–Noon at the Barn**

**3131 Pacific Ave., Livermore  
(LARP D Rummage Sale)  
Spread the word and shop the sale!**

## **GIVEAWAY BY THE GUILD**

Sturdy 6-foot long folding tables.  
Call Maudie at 925-447-3524 for details.

## **SAVE the Date!**

♪ **Pops Concert** ♪  
**Friday, October 23, 2015**  
Nancy McKenzie and her steering committee are already hard at work!

## Livermore-Amador Symphony Association Annual Financial Report Fiscal Year 2013-14

### ASSETS

| June 30, 2014           |                 | Association<br>Operating | Guild            | King Award<br>Fund | Assoc. Award<br>Fund | Green Award<br>Fund | Ide<br>Fund      | Fischer<br>Fund  | Total              |
|-------------------------|-----------------|--------------------------|------------------|--------------------|----------------------|---------------------|------------------|------------------|--------------------|
| <b>Account Balances</b> |                 |                          |                  |                    |                      |                     |                  |                  |                    |
| Checking                |                 | 55,802.38                | 31,546.84        |                    |                      |                     |                  |                  | 87,349.22          |
| Savings                 |                 |                          | 0.00             | 1,303.90           | 1,630.94             | (737.73)            |                  |                  | 2,197.11           |
| Time Deposits           |                 | 55,737.76                | 50,452.10        | 14,984.79          | 26,601.48            | 10,859.00           | 20,372.78        | 32,849.57        | 211,857.48         |
| Postal Account          |                 | 31.38                    |                  |                    |                      |                     |                  |                  | 31.38              |
| Accounts Receivable     |                 | 8,834.01                 | (1,389.08)       |                    |                      |                     |                  | (7,030.81)       | 414.12             |
| Accounts Payable        |                 | (2,120.88)               |                  |                    | 50.00                | 1,765.00            | 249.77           |                  | (56.11)            |
| <b>Total</b>            |                 | <b>118,284.65</b>        | <b>80,609.86</b> | <b>16,288.69</b>   | <b>28,282.42</b>     | <b>11,886.27</b>    | <b>20,622.55</b> | <b>25,818.76</b> | <b>301,793.20</b>  |
| <b>Adjustments</b>      |                 |                          |                  |                    |                      |                     |                  |                  |                    |
| Deferred Revenue        | FY 14-15        | (43,867.74)              |                  |                    |                      |                     |                  |                  | (43,867.74)        |
| Prepaid expenses        | FY 14-15        | 1,204.35                 |                  |                    |                      |                     |                  |                  | 1,204.35           |
| <b>Total</b>            | <b>FY 14-15</b> | <b>(42,663.39)</b>       | <b>0.00</b>      | <b>0.00</b>        | <b>0.00</b>          | <b>0.00</b>         | <b>0.00</b>      | <b>0.00</b>      | <b>(42,663.39)</b> |
| <b>Adjusted Total</b>   |                 | <b>75,621.26</b>         | <b>80,609.86</b> | <b>16,288.69</b>   | <b>28,282.42</b>     | <b>11,886.27</b>    | <b>20,622.55</b> | <b>25,818.76</b> | <b>259,129.81</b>  |
| July 1, 2013            |                 |                          |                  |                    |                      |                     |                  |                  |                    |
| <b>Account Balances</b> |                 |                          |                  |                    |                      |                     |                  |                  |                    |
| Checking                |                 | 29,038.73                | 28,443.75        |                    |                      |                     |                  |                  | 57,482.48          |
| Savings                 |                 |                          | 0.00             | 101.78             | 1,128.39             | (437.07)            |                  |                  | 793.10             |
| Time Deposits           |                 | 55,000.00                | 50,280.02        | 14,727.05          | 26,577.91            | 12,540.23           | 20,230.68        | 32,653.06        | 212,008.95         |
| Postal Account          |                 | 64.46                    |                  |                    |                      |                     |                  |                  | 64.46              |
| Accounts Receivable     |                 | 7,030.81                 |                  |                    |                      |                     |                  | (7,030.81)       | 0.00               |
| Accounts Payable        |                 | (2,417.94)               |                  |                    |                      |                     | 249.77           |                  | (2,168.17)         |
| <b>Total</b>            |                 | <b>88,716.06</b>         | <b>78,723.77</b> | <b>14,828.83</b>   | <b>27,706.30</b>     | <b>12,103.16</b>    | <b>20,480.45</b> | <b>25,622.25</b> | <b>268,180.82</b>  |
| <b>Adjustments</b>      |                 |                          |                  |                    |                      |                     |                  |                  |                    |
| Deferred Revenue        | FY 13-14        | (8,461.18)               |                  |                    |                      |                     |                  |                  | (8,461.18)         |
| Prepaid expenses        | FY 13-14        | 1,295.03                 |                  |                    |                      |                     |                  |                  | 1,295.03           |
| <b>Total</b>            | <b>FY 13-14</b> | <b>(7,166.15)</b>        |                  |                    |                      |                     |                  |                  | <b>(7,166.15)</b>  |
| <b>Adjusted Total</b>   |                 | <b>81,549.91</b>         | <b>78,723.77</b> | <b>14,828.83</b>   | <b>27,706.30</b>     | <b>12,103.16</b>    | <b>20,480.45</b> | <b>25,622.25</b> | <b>261,014.67</b>  |
| <b>CHANGE IN ASSETS</b> | <b>FY 13-14</b> | <b>(5,928.65)</b>        | <b>1,886.09</b>  | <b>1,459.86</b>    | <b>576.12</b>        | <b>(216.89)</b>     | <b>142.10</b>    | <b>196.51</b>    | <b>(1,884.86)</b>  |

### INCOME/EXPENSES FY 13-14

| Income                            |                 |                   |                  |                 |                 |                 |               |               |                   |
|-----------------------------------|-----------------|-------------------|------------------|-----------------|-----------------|-----------------|---------------|---------------|-------------------|
| Concert Income                    |                 | 34,499.75         |                  |                 |                 |                 |               |               | 34,499.75         |
| Grants                            |                 | 2,212.39          | 0.00             |                 |                 |                 |               |               | 2,212.39          |
| Indiv.&Bus. Contributions         |                 | 19,253.14         | 1,625.00         | 1,500.00        | 150.00          | 0.00            |               |               | 22,528.14         |
| Guild gift                        |                 | 10,000.00         | (11,000.00)      |                 | 1,000.00        |                 |               |               | 0.00              |
| Interest/Investment               |                 | 763.36            | 197.86           | 259.86          | 26.12           | 83.11           | 142.10        | 196.51        | 1,688.92          |
| Special Performances              |                 | 4,440.52          |                  |                 |                 |                 |               |               | 4,440.52          |
| Fund Transfers                    |                 | 0.00              |                  |                 |                 |                 |               |               | 0.00              |
| Pops repay to LAS/Fund Raisers    |                 | 4,618.32          | 39,188.86        |                 |                 |                 |               |               | 43,807.18         |
| Membership dues                   |                 |                   | 2,640.00         |                 |                 |                 |               |               | 2,640.00          |
| Educational Projects              |                 | 5,669.05          |                  |                 |                 |                 |               |               | 5,669.05          |
| Other                             |                 | 0.00              | 0.00             |                 |                 |                 |               |               | 0.00              |
| <b>Total Income</b>               |                 | <b>81,456.53</b>  | <b>32,651.72</b> | <b>1,759.86</b> | <b>1,176.12</b> | <b>83.11</b>    | <b>142.10</b> | <b>196.51</b> | <b>117,465.95</b> |
| Expenses                          |                 |                   |                  |                 |                 |                 |               |               |                   |
| LAS Artistic Personnel            |                 | 30,659.10         |                  |                 |                 |                 |               |               | 30,659.10         |
| LAS Concert Production            |                 | 29,272.33         |                  |                 |                 |                 |               |               | 29,272.33         |
| LAS Concert Programs              |                 | 2,051.94          |                  |                 |                 |                 |               |               | 2,051.94          |
| Promotion/Public Relations        |                 | 8,127.17          | 5,144.11         |                 |                 |                 |               |               | 13,271.28         |
| Special Performances              |                 | 4,440.52          |                  |                 |                 |                 |               |               | 4,440.52          |
| Competition and awards            |                 | 974.14            |                  | 300.00          | 600.00          | 300.00          |               |               | 2,174.14          |
| Youth outreach                    |                 | 1,238.25          |                  |                 |                 |                 |               |               | 1,238.25          |
| Youth orchestra                   |                 | 5,565.05          |                  |                 |                 |                 |               |               | 5,565.05          |
| Fund Raisers                      |                 |                   | 17,388.31        |                 |                 |                 |               |               | 17,388.31         |
| Administration                    |                 | 4,262.59          | 8,233.20         |                 |                 |                 |               |               | 12,495.79         |
| Other (includes credit card fees) |                 | 794.09            |                  |                 |                 |                 |               |               | 794.09            |
| <b>Total Expenses</b>             |                 | <b>87,385.18</b>  | <b>30,765.62</b> | <b>300.00</b>   | <b>600.00</b>   | <b>300.00</b>   | <b>0.00</b>   | <b>0.00</b>   | <b>119,350.80</b> |
| <b>INCOME less EXPENSES</b>       | <b>FY 13-14</b> | <b>(5,928.65)</b> | <b>1,886.10</b>  | <b>1,459.86</b> | <b>576.12</b>   | <b>(216.89)</b> | <b>142.10</b> | <b>196.51</b> | <b>(1,884.85)</b> |

### SUMMARY

|           |                      |            |           |           |           |           |           |           |            |
|-----------|----------------------|------------|-----------|-----------|-----------|-----------|-----------|-----------|------------|
| 7/1/2013  | Account Balances     | 88,716.06  | 78,723.77 | 14,828.83 | 27,706.30 | 12,103.16 | 20,480.45 | 25,622.25 | 268,180.82 |
| FY 13-14  | Adjustments          | (7,166.15) | 0.00      | 0.00      | 0.00      | 0.00      | 0.00      | 0.00      | (7,166.15) |
| FY 13-14  | Income less Expenses | (5,928.65) | 1,886.10  | 1,459.86  | 576.12    | (216.89)  | 142.10    | 196.51    | (1,884.85) |
| FY 14-15  | Adjustments          | 42,663.39  | 0.00      | 0.00      | 0.00      | 0.00      | 0.00      | 0.00      | 42,663.39  |
| 6/30/2014 | Account Balances     | 118,284.65 | 80,609.87 | 16,288.69 | 28,282.42 | 11,886.27 | 20,622.55 | 25,818.76 | 301,793.21 |

This report to the members of the Association, required by California non-profit law has been condensed for your convenience. Questions may be directed to the Treasurer, Trey Johnston 925-292-4804.

Reviewed by the LASA Internal Audit Committee

  
Chairman, Audit Committee

31 January 2015  
Date

Prepared by T. Johnston 1/31/2015

Livermore-Amador Symphony Association  
P. O. Box 1049  
Livermore, CA 94551-1049

Nonprofit  
Organization  
U.S. Postage  
Paid  
Livermore, CA  
Permit 120

RETURN SERVICE REQUESTED

SYMPHONY NOTES

---

## Calendar - February 2015 and Beyond

**Saturday, February 21, 2015**

*Livermore-Amador Symphony Concert: Young Love*

With Solos by Winners of the Competition for Young Musicians

8:00 p.m., The Bankhead Theater, Livermore

See pages 1, 2, 3, 5.

**Saturday, April 11, 2015**

*Livermore-Amador Symphony Concert: Fantastic Flute!*

Annie Wu, soloist

8:00 p.m., The Bankhead Theater, Livermore

See page 3.

**Special Events for our May Concert:**

See pages 2, 3.

**Thursday, May 7, 2015**

*Fundraiser Screening of the 1998 Film, The Red Violin*

7:00 p.m., The Vine Theater, Livermore, immediately followed by

9:00 p.m., Dessert and wine buffet at Zephyr Restaurant, Livermore

**Friday, May 15, 2015**

*Evening Soiree with Soloist Elizabeth Pitcairn*

**Saturday, May 16, 2015**

*Livermore-Amador Symphony Concert: Beethoven and the Red Violin*

Elizabeth Pitcairn, soloist

8:00 p.m., The Bankhead Theater, Livermore

See page 3.