



Symphony Notes

A publication of the Livermore-Amador Symphony and Guild

Vol.52, No.4, May 2015

THE LIVERMORE-AMADOR SYMPHONY

Arthur P. Barnes, Music Director Emeritus

Presents

Beethoven and the Red Violin

Lara Webber, Music Director & Conductor

Saturday, May 16, 2015, at 8:00 p.m.

**BANKHEAD THEATER, 2400 First Street, Livermore
Livermore Performing Arts Center**

Prelude talk 7:00 – 7:30 p.m.

Doors open at 6:30 p.m.

Lara Webber

Polonaise from *Eugene Onegin*

Pyotr Ilyich Tchaikovsky

Symphony No. 3

Alexander Borodin

~~~~~Intermission~~~~~

**Violin Concerto in D Major**

**Ludwig van Beethoven**

**Elizabeth Pitcairn, soloist**

#### **TICKET INFORMATION**

**Tickets are available at the Bankhead ticket office.**

**Contributions to the Symphony may also be given at the ticket office.**

**In Person:** Bankhead Theater Ticket Office, 2400 First Street, Livermore

Tuesday through Saturday, Noon to 6 p.m.

**Website:** [www.bankheadtheater.org](http://www.bankheadtheater.org) **Phone:** 925-373-6800

Make checks payable to LVPAC.

**Linda Tinney,  
LAS Guild**

♪♪ *From our  
Presidents* ♪♪

**Denise Leddon,  
LAS Association**

This season has been truly exciting for the Guild. Each concert has been special in its programming, and the guest soloists have been highly talented. The enthusiasm of Lara Webber, our new music director and conductor, has been contagious!

The Symphony Guild has enjoyed creating events around each concert, including some extra-special offerings for the last concert of the season, "Beethoven and the Red Violin." In anticipation of Elizabeth Pitcairn's performance with the orchestra, there will be a screening of the film *The Red Violin* at the Vine Theater on May 7, at 7:00 p.m. Immediately following, a dessert and wine party will take place next door at the Zephyr Grill and Bar. On May 15 at 6:00 p.m., Ms. Pitcairn will perform a program of solo violin pieces at a musical soirée in a private home. (Page 3 has details about tickets for these events.)

Right after the May 16 concert performance, the Guild will host a champagne reception in the Bankhead lobby to toast the conclusion of a very successful concert season. Please join us!

Sincere thanks to Joan Seppala and the staff at *The Independent* for allowing the Guild to host a reception in their lovely building after the April concert. It was wonderful visiting with orchestra and Guild members and their guests, including our talented soloist, Annie Wu. I especially thank our reception hostesses Nan Davies, Maudie Kuenning, and Leona Brush, and all the Guild members who prepared the tasty treats.

*Linda Tinney, LAS Guild President*

*Symphony Notes* is published four times a year for members of the Livermore-Amador Symphony Association, Orchestra, and Guild. Symphony Association President Denise Leddon; Guild President Linda Tinney; Editor Marcia Stimatz Elchesen. PO Box 1049, Livermore, CA 94551-1049. 925-447-6454. Website: [www.livermoreamadorsymphony.org](http://www.livermoreamadorsymphony.org)

Livermore-Amador Symphony is a member of Livermore Cultural Arts Council (LCAC), which encourages "cross-promotion" among the arts groups. Check out their calendar [http://www.independentnews.com/event\\_calendar/cultural\\_arts\\_calendar/](http://www.independentnews.com/event_calendar/cultural_arts_calendar/)

This season has flown by! I've always heard that when you do new and different things it stretches out time. What happened? We've been having fun! We've worked hard musically and behind the scenes, and it shows.

At the April 21<sup>st</sup> LASA Annual Association meeting, we re-elected returning board members Lynda Alvarez, David Greiner, Nick James, Denise Leddon, Ron White, and Beth Wilson. We'd like to extend an especially warm welcome to new Board member Min Xu. Min is the mother of our April flute soloist Annie Wu. Welcome Min! Thank you to the Guild for presenting your annual \$10,000 gift to the Symphony! Our Symphony would not exist without the fundraising efforts of the hard-working members of our Guild.

Officers elected at the April 27<sup>th</sup> LASA Board meeting were Denise Leddon, President; Marcia Stimatz Elchesen, Vice-President; Carol Boster, Secretary; and Trey Johnston, Officer-at-Large. They will serve one-year terms beginning July 1, 2015. The treasurer's one-year term begins September 1. Election for Treasurer is pending.

Soon we will hear the magic from Elizabeth Pitcairn and her Red Violin. See you at the "Red Violin" events and the May 16 concert. We also hope to see all of you next season!

*Denise Leddon, LAS Association President*

**Notice to Concert Ticket Holders.  
Can't use your concert tickets?**

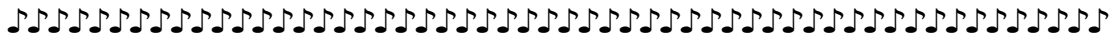
Call the Bankhead Ticket Office (925-373-6800) up to 1 hour before the concert to release your seats. You will be mailed a tax donation receipt.

**Attention  
Facebook  
Users!**



Kathy Boster, who plays clarinet in the Symphony and co-directs our youth orchestra, also manages our Facebook presence. Check us out!

# Upcoming Concerts



## May 16 Concert

### “Beethoven and the Red Violin”

**Elizabeth Pitcairn, soloist**

*Playing the legendary 1720 “Red Mendelssohn”  
Stradivarius - Beethoven’s Violin Concerto in D Major*

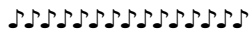
~ Following the Concert ~



**A Sparkling Toast!  
Bankhead Lobby  
Hosted by the  
Symphony Guild**

### Don’t Miss These Special Red Violin Events Planned by the Symphony Guild!

Last chance to sign up! All funds raised benefit the Symphony. **Call Joan Dickinson now! 925-447-6454.**



#### Screening of the film *The Red Violin*

Thursday, May 7, 7:00 p.m.

Vine Cinema

1722 First St., Livermore

**\$10 movie only**

(Purchase tickets at the door May 7.)

*Immediately followed by*

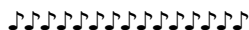
**Dessert and Wine Buffet**

**Zephyr Grill and Bar**

1736 First St. (next to the Vine)

**\$50 movie and buffet**

(Limited seating for the buffet; advance tickets only.)



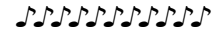
#### Musical Soirée with Elizabeth Pitcairn

Friday, May 15, 6:00 p.m.

**Cost: \$85** (Must reserve in advance.)

A unique opportunity to hear Pitcairn perform solo violin works in an intimate setting and hear about her remarkable violin. Enjoy wine and hors d’oeuvres, too! She is graciously donating her performance—all profits benefit the Symphony.

## 2015–2016 SEASON



### *Livermore-Amador Symphony*

**Regular Concert Season**

**Bankhead Theater, Livermore**

**Renew your subscription and**

**Mark your calendar now!**

**December 5, 2015**

**February 20, 2016**

**April 9, 2016**

**May 21, 2016**

*See Preview Flyer insert for details.*



### **The Rose Tradition**

**Continues!** *Renew your  
season tickets by **May 16***

*and you will receive a rose at the May  
concert. Make check payable to LVPAC  
and mail to Bankhead ticket office or  
turn in at the lobby table at the May  
concert. Renew at the Bankhead ticket  
office if you wish to use a credit card.*

### **The Symphony Guild**

**Invites you to**

**SAVE THE DATE!**

♪ **POPS Concert** ♪

**“Dream along with the Pops”**

**Friday, October 23, 2015**

**Robert Livermore Community Center**

Tickets sales begin September 15.

*See the Preview Flyer insert, and*

*Check the Symphony website in late August.*



### **Livermore-Amador Symphony**

**Youth Orchestra Concert**

**Saturday, August 8, 2015, 8:00 p.m.**

(See page 5 for details about  
LASYO.)

# Livermore-Amador Symphony Guild

## Guild Officers Elected

At its annual meeting on April 16, the Guild elected officers for the 2015–2016 season: **Linda Tinney**, President; **Marie Ross**, Vice-President; **Marcia Stimatz Elchesen**, Recording Secretary; **Joan Dickinson**, Treasurer; and **Leona Brush**, Corresponding Secretary. **Leota Lee** is Parliamentarian. **Barbara Morrison** and **Mary Ann Johnston** were elected to join **Pat Burnett** and **Sally Swanson** on the Nominating Committee. Installation will take place at the annual spring luncheon on May 28.

Following the business meeting, attendees were treated to entertainment by Quail Run Trio (**Linda Tinney**, piano; **Judy Eckart**, violin; and **Margot Green**, flute). The group performed *Habanera* and *Entr'acte* by Georges Bizet, *The Lovers' Waltz* by Jay Ungar and Molly Mason, *Basque* by Elton John, *Sobre La Plaza* by T. H. Rollinson, and *The Second Waltz* by Dmitri Shostakovich. Thanks to Nan and Walt Davies for hosting the meeting and to the Guild members who provided refreshments.

## Annual Guild Luncheon and Installation of Officers

With Entertainment by  
**Anna Lorenz, Harp**  
Thursday, May 28, 2015, 11:30 a.m.

Doubletree Hotel  
720 Las Flores Rd., Livermore  
Cost \$20.00 (includes tax and tip)

**Check payable to LAS Guild.**

**Please RSVP by May 21 to  
Linda Miller**

*Guild Membership Chair*  
925-443-7398

### REMINDER!

**Please complete and return your  
2015–16 Guild Membership Form.**

(It was included in April *Symphony Notes*, and it is also available on the Symphony's website.) You can turn it in at the luncheon or mail it to the Symphony Guild PO Box.



## ESTATE SALES NEWS

Money raised benefits LAS!

**Support the Guild:** Income from estate sales is one of the main ways the Guild raises money. Volunteer at a sale, shop at a sale, or ask the Guild to conduct a sale if you're closing out a home or significantly downsizing.

### Moving Sale May 1–2

Busy members of the Guild worked for several weeks to organize and conduct a moving sale in San Ramon. Details of the outcome will be reported in the next *Symphony Notes*.

**If you'd like email notices of upcoming sales** and don't currently receive them, email **Marie Ruzicka**, *Estate Sales Chair* at [<marie.ruz@gmail.com>](mailto:marie.ruz@gmail.com).

### Guild Estate Sales Committee Announces

**BIG CLEARANCE SALE!**

**Don't Miss It!**

**June 5–6, 2015**

**3737 1<sup>st</sup> St., Livermore  
(Old Ford Showroom)**

**50% off all items!** (except jewelry)

We are pulling everything out of our storage unit and collecting from all of you who have been storing Guild items at your home! To arrange for pickup contact Nancy McKenzie 925-294-8657 or Marie Ruzicka <[marie.ruz@gmail.com](mailto:marie.ruz@gmail.com)>.

**ALSO please contact Marie or Nancy if you can help with the sale!**

## ♪♪ *YOUTH – The Future of Classical Music* ♪♪!



### **Livermore-Amador Symphony Youth Orchestra (LASYO) Concert August 8, 2015, 8:00 p.m.**

The youth orchestra, sponsored by the Symphony Association, is now entering its 7<sup>th</sup> summer! Each year, about 60 musicians from ages 11–21 have participated. In addition, several seasoned players from the regular LAS orchestra volunteer as mentors for the program. Weekly rehearsals will take place at Livermore’s Bothwell Center beginning on June 23, and will culminate in a concert on Saturday, August 8<sup>th</sup>. (Concert venue is pending.) The program will include pieces by Bach, Beethoven, Gounod, Grainger, and Mozart. This concert will also feature a world premiere performance, “Changing of the Seasons,” composed by Peter Chatterjee. He previously performed with LASYO on oboe and is now majoring in composition at the Berklee College of Music in Boston. **Mark your calendar for the concert date, and check the Symphony’s website in July for confirmed concert location!**

LASYO coordinator is Betsy Hausburg (who plays tuba in LAS); music directors are Göran Berg and Kathy Boster. Berg is artistic director of Sycamore Strings Academy in Livermore. LAS clarinet player Boster is music director of orchestra, band, and choir at Livermore’s East Avenue Middle School.

### **Competition for Young Musicians Coming in October**

The competition is open to instrumentalists and vocalists who reside or attend school in Livermore, Pleasanton, Sunol, Dublin, or San Ramon. Students are eligible through grade twelve. (If not enrolled in high school, the maximum age is 17.) By September 27, students must submit an application and a recording for preliminary screening. Those who pass the screening will be invited to audition on October 18. The winners will perform as soloists with the Symphony at its February concert. Detailed information will be on the Symphony’s website by the latter part of May.

*JoAnn Cox, Competition Chair*

### **Awards for High School Seniors**

The Symphony Association administers four awards (currently \$400 each) to recognize high school seniors who have made significant contributions to school and community musical activities. (The awards are not based on students’ music ability or plans to pursue further music education.) Students who reside or attend school in Livermore, Pleasanton, Sunol, Dublin, or San Ramon, or who have actively participated as LAS musicians, are eligible to apply.

**The 2015–2016 awards will be presented at the Symphony’s concert on December 5, 2015.** Applications will be available in late summer and **due October 11, 2015.** If you have questions, please contact Awards Committee Chair Nissa Nack at 925-484-1942 or [nissanack@comcast.net](mailto:nissanack@comcast.net). (For reference only, the 2014–2015 application can be found on the Symphony’s Youth Awards website page.)



### **Fiddle Club Wraps Up Another Successful Year!**

Fiddle Club, which aims to introduce 5<sup>th</sup> graders to the violin, has just finished its third year. The program ran at two local schools this time: Jackson Elementary in Livermore (January–February), and Kolb Elementary in Dublin (March–April). The program was organized by the Association’s Youth Outreach Committee (Beth Wilson, Susan Campbell, and Jutta Massoud). Wilson and Massoud are also LAS violinists. Massoud was the instructor for both fiddle clubs, with volunteer assistance from her teenage daughter, Anya. The program is offered at no cost to students, thanks to funding from grants. Massoud noted that many of the students from last year’s fiddle club chose Orchestra as their elective when they started middle school.

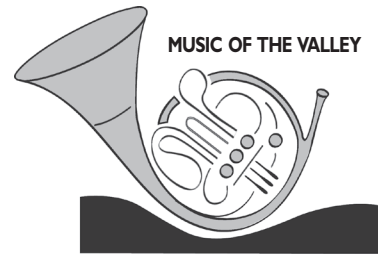
# Livermore-Amador Symphony 2015–2016 Season Preview

Lara Webber, Music Director & Conductor

Dr. Arthur P. Barnes, Music Director Emeritus

## Subscribe Today!

Use the form below.



Start the season with the POPS concert.  
**Dream along with the Pops**  
Friday October 23, 2015  
Tickets on sale Sept. 15 at \$30 each or 8 for \$210.  
Call 925.447.6454 starting 9/15/15.  
livermoreamadorsymphony.org/pops

### Symphonic Stories

**Saturday December 5, 2015**

Prelude talk, 7:15–7:45 p.m.; concert begins, 8:15 p.m.

- Humperdinck: *Hänsel and Gretel* Prelude  
Prokofiev: Peter and The Wolf  
John Marchand, narrator  
Ravel: Ma mère l'oye (Mother Goose)  
Tchaikovsky: *Sleeping Beauty* Suite

### Dvořák Cello Concerto

**Saturday April 9, 2016**

Prelude talk, 7–7:30 p.m.; concert begins, 8 p.m.

- Mussorgsky: *Khovantchina* Introduction  
Prokofiev: *Romeo and Juliet* Suite No. 2  
Dvořák: Cello Concerto in B Minor  
Austin Huntington, soloist

### Color and Romance

**Saturday February 20, 2016**

Prelude talk, 7–7:30 p.m.; concert begins, 8 p.m.

- Theofandis: Rainbow Body  
Brahms: Variations on a Theme of Joseph Haydn  
Saint-Saëns: Danse Bacchanale  
from *Samson and Delilah*  
Plus solos by the winners of the 2015–2016  
Competition for Young Musicians

### A Tale of Two Cities

**Saturday May 21, 2016**

Prelude talk, 7–7:30 p.m.; concert begins, 8 p.m.

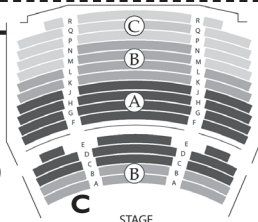
- Barber: Knoxville: Summer of 1915  
Heidi Moss, soprano  
Bernstein: *On the Town*: Three Dance Episodes  
Bizet: *L'Arlésienne* Suites No. 1 and No. 2

Programs and venues subject to change. Single-concert tickets go on sale in Sept. 2015 at \$35, \$29, or \$25 for adults and \$10 for youth.

### Tickets

Sections are defined on diagram at right.

Youth are through age 21.



#### SEASON TICKETS (Dec., Feb., April, May)

| Section | A                              | B                             | C                             |
|---------|--------------------------------|-------------------------------|-------------------------------|
| ADULT   | <input type="checkbox"/> \$110 | <input type="checkbox"/> \$99 | <input type="checkbox"/> \$85 |
| YOUTH   | <input type="checkbox"/> \$40  | <input type="checkbox"/> \$40 | <input type="checkbox"/> \$40 |

#### EARLY PURCHASE SEASON TICKETS (May–June)

| Section | A                              | B                             | C                             |
|---------|--------------------------------|-------------------------------|-------------------------------|
| ADULT   | <input type="checkbox"/> \$105 | <input type="checkbox"/> \$92 | <input type="checkbox"/> \$80 |
| YOUTH   | <input type="checkbox"/> \$40  | <input type="checkbox"/> \$40 | <input type="checkbox"/> \$40 |

### Donations

Please consider a tax-deductible contribution.

- Donor levels: Angel, \$1500 or more;  
Patron, \$1000–\$1499; Benefactor, \$500–\$999;  
Sustainer, \$300–\$499; Supporter, \$200–\$299;  
Contributor, \$100–\$199; Friend, \$50–\$99

### Totals

Write check to LVPAC and mail or take to the Bankhead Theater Box Office, 2400 First St., Livermore CA 94550, or phone (925) 373-6800, or see [www.bankheadtheater.org](http://www.bankheadtheater.org). Season tickets will be mailed in September.

Tickets: \$ \_\_\_\_\_  
Donation (thank you!): \$ \_\_\_\_\_  
Tickets + Donation: \$ \_\_\_\_\_

Name(s) \_\_\_\_\_  
Address \_\_\_\_\_  
City \_\_\_\_\_ State/Zip \_\_\_\_\_  
Telephone \_\_\_\_\_  
E-mail \_\_\_\_\_ Current seat(s) \_\_\_\_\_

### Renewing?\*

I want to retain my seat(s) from 2014–2015.

The membership of the Livermore-Amador Symphony Association is composed of adult season ticket subscribers, volunteer orchestra members, and donors of \$50 or more.

\* Retention of seats is guaranteed only for renewals received by July 1, 2015.

Purchase season tickets for 2015–2016 before or at the May 16, 2015, concert to receive a rose at the concert.

For further information please call 925.447.6454 or see [livermoreamadorsymphony.org](http://livermoreamadorsymphony.org).



Livermore-Amador Symphony Association  
P. O. Box 1049  
Livermore, CA 94551-1049

Nonprofit  
Organization  
U.S. Postage  
Paid  
Livermore, CA  
Permit 120

RETURN SERVICE REQUESTED

SYMPHONY NOTES

---

## Calendar - May 2015 and Beyond

### **Special Events for our May Concert:**

See pages 2 and 3.

**Thursday, May 7, 2015**

*Fundraiser Screening of the 1998 Film, The Red Violin*

7:00 p.m., The Vine Theater, Livermore, immediately followed by

9:00 p.m., Dessert and wine buffet at Zephyr Restaurant, Livermore

**Friday, May 15, 2015**

6:00 p.m., *Evening Soirée with Soloist Elizabeth Pitcairn*

**Saturday, May 16, 2015**

***Livermore-Amador Symphony Concert: Beethoven and the Red Violin***

Elizabeth Pitcairn, soloist

8:00 p.m., The Bankhead Theater, Livermore

See pages 1, 2, and 3.

***Estate Sales Committee Sales May 1–2 and June 5–6***

See page 4.

**Thursday, May 28, 2015**

11:30 a.m., *Guild Luncheon and Installation of Officers*

See page 4.

**Saturday, August 8, 2015**

8:00 p.m., *Livermore-Amador Symphony Youth Orchestra Concert*

See page 5.

**Friday, October 23, 2015**

*Livermore-Amador Symphony POPS Concert: Dream along with the Pops*

See page 3.