

LIVERMORE-AMADOR SYMPHONY

LARA WEBBER,
MUSIC DIRECTOR & CONDUCTOR

2016–2017

ARTHUR P. BARNES, MUSIC DIRECTOR EMERITUS

www.livermoreamadorsymphony.org



A Heavenly Life

Saturday December 3, 2016

Concert, 8:15 p.m. (No Prelude talk—holiday parade day)

Mozart: Exsultate, Jubilate

Mahler: Symphony No. 4

Emily Helenbrook, soprano soloist



Begin your holiday season with the radiant, sunny optimism of musical giants Mozart and Mahler as we present two joyful works featuring the beautiful voice of a rising star, Emily Helenbrook. Mozart's *Exsultate, Jubilate* urges us to raise our voices in joyful exuberance, and with the jingle of sleigh bells, Mahler's glorious Symphony No. 4 invites us to leave our worldly cares behind and opens the gates of heaven.

ArtVoice raved about "the fresh young singer, Emily Helenbrook...the angelically voiced soprano...." after she performed with the Buffalo Philharmonic in 2015. A senior at the Eastman School of Music, Helenbrook won an Art Leadership Award in 2015 and the Annabel Muentner Vocal Prize in the 2016 Friends of Eastman Opera Voice Competition.

Inspirational Journeys

Saturday February 18, 2017

Prelude talk, 7–7:30 p.m. Concert, 8 p.m.

Higdon: Blue Cathedral

Grieg: Symphonic Dances

Plus solos by the winners of the 2016–2017 Competition for Young Musicians

"...I found myself imagining a journey through a glass cathedral in the sky..."—Higdon

American composer Jennifer Higdon takes us on a spiritual journey, inspired by the memory of her younger brother whose loss was the catalyst for her extraordinary work "Blue Cathedral". Meet the winners of our 2016-17 Competition for Young Musicians who are the centerpiece of this colorful program. Our musical journey continues through the melodic gift of Edvard Grieg, who evokes a lush Norwegian landscape in his *Symphonic Dances*.

Transfigurations

Saturday April 8, 2017

Prelude talk, 7–7:30 p.m. Concert, 8 p.m.

Wagner: Lohengrin Prelude to Act I

Tchaikovsky: Swan Lake Suite

Schubert: Rosamunde Overture

Strauss: Death and Transfiguration

Matilda Hofman, guest conductor



Join the symphony and guest conductor Matilda Hofman for an evening of magic and transformation. Wagner's ethereal prelude to *Lohengrin* and Tchaikovsky's hauntingly beautiful *Swan Lake* are connected by themes of sorcery, redemption, forbidden questions, and swan transformations. The *Rosamunde* overture is quintessential Schubert, and involves the transformation of a poor shepherdess into a queen. Strauss's early tone poem *Death and Transfiguration* is preoccupied with late romantic obsessions of the individual who, struggling with the world, is finally redeemed.

Music director of the Diablo Symphony, Matilda Hofman has a busy schedule in California and abroad. She works regularly with Empyrean Ensemble, the Early Music Ensemble at Davis, and the Left Coast Chamber Ensemble. She studied at Cambridge University, the Royal Academy of Music, and the Eastman School of Music, and was a conducting fellow at the Aspen Music Festival and school.

Arabian Nights

Saturday May 20, 2017

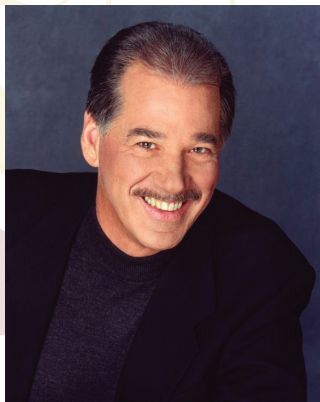
Prelude talk, 7–7:30 p.m. Concert, 8 p.m.

Grieg: Piano Concerto in A Minor

Rimsky-Korsakov: Scheherazade

Kristina Anderson, violin

Frank Wiens, piano soloist



Critically acclaimed pianist Frank Wiens joins us to perform Grieg's gorgeous Piano Concerto in A Minor. A sonic feast of brilliant colors and magnificent orchestral effects, Rimsky-Korsakov's *Scheherazade* captures the imagination of the audience and never lets go. Based on a series of scenes from *The Arabian Nights*, Scheherazade the storyteller is represented by beautiful violin solos that magically weave the tales together. Join us as we conclude our season with these two symphonic blockbuster hits!

Piano program director and professor of piano at the University of the Pacific Conservatory of Music in Stockton, Frank Wiens lectures, leads master classes, adjudicates numerous piano competitions, and is a celebrated performer who keeps an active concert schedule in the U.S. and internationally.

Program descriptions courtesy of Lara Webber and (April concert:) Matilda Hofman.

Programs subject to change.

The audience and performers are invited to enjoy a sparkling wine reception, hosted by the Livermore-Amador Symphony Guild, in the lobby after each concert.

The Livermore-Amador Symphony Guild is underwriting the cost of providing a harp player at LAS concerts during the 2016–2017 season.

MUSIC OF THE VALLEY

Livermore-Amador Symphony is a resident company of the Bankhead Theater
2400 First Street, Livermore



Single-Concert Tickets

Tickets for individual performances are available from the Bankhead Theater after July 12, 2016, at \$35/\$30/\$25, adult; \$12, youth (through age 21). Call 925.373.6800, see bankheadtheater.org, or go to the box office at 2400 First St., Livermore. For more information, call the Symphony at 925.447.6454 or visit livermoreamadorsymphony.org/tickets.

Grants and Matching Gifts

Funding has been gratefully received from:

Livermore Valley Performing Arts Center (LVPAC) and Pleasanton Arts Commission

The Boeing Company

LVPAC and Shea Homes

LVPAC Education Fund

City of Livermore Commission for the Arts

Livermore Rotary Club

LVPAC and Pleasanton Youth Commission

Lawrence Livermore National Laboratory

Symphony Association Board of Directors 2016–2017

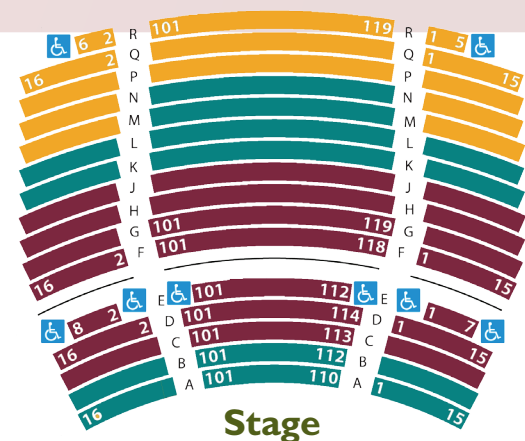
Lynda Alvarez
Carol Boster
Marcia S. Elchesen
Alan Frank
Ursula Goldstein
David Greiner
Nick James
Jean King
Denise Leddon
Jutta Massoud

Jacqueline McBride
Virginia McFann
Lynn Seppala
Clark Streeter
Linda Tinney
Ron White
Beth Wilson
Min Xu
Juliana Zolynas

Season Tickets

Use the form on reverse. Bring it to the May 21, 2016, concert or mail it to the Bankhead Theater Box Office, 2400 First St., Livermore CA 94550. Or, order by phone at 925.373.6800 or online at bankheadtheater.org after 5/25/16.

Bankhead Theater



Stage

Donor Levels

Invest in quality music in the Valley. In addition to your ticket purchase, please consider a tax-deductible contribution.

Angel	\$1500 or more
Patron	\$1000–\$1499
Benefactor	\$500–\$999
Sustainer	\$300–\$499
Supporter	\$200–\$299
Contributor	\$100–\$199
Friend	\$50–\$99



@livamsymph



The membership of the Livermore-Amador Symphony Association is composed of adult season ticket subscribers, volunteer orchestra members, and donors of \$50 or more.

For further information please call 925.447.6454 or see www.livermoreamadorsymphony.org.



www.livermoreamadorsymphony.org